

Look up and  
look out  
for power lines!



## Co-op returns \$1.45 million in Capital Credits to members

by General Manager Steve Stroshane



I'm pleased to report that Polk-Burnett Electric Cooperative will return \$1,450,052 in Capital Credits, including \$915,000 to co-op members who purchased electricity in 1999, 2000 and/or 2017, and \$535,052 from our power provider, Dairyland Power Cooperative, to members who purchased power in 1992 through 1995.

### It pays to be a co-op member: If you were a member those years, you'll get money back!

As a member-owned, not-for-profit electric co-op, Polk-Burnett operates at cost. Any money left after expenses is returned to members, according to our co-op principles. Instead of returning money to distant shareholders, Polk-Burnett returns Capital Credits to the local people we serve. Capital Credits are distributed each year and are a direct benefit of co-op membership.

16,770 active members and 8,766 former members will receive Capital Credits in September.

## WATCH FOR YOUR CAPITAL CREDITS ON YOUR SEPTEMBER BILL!

The amount of your credit is based on electricity you purchased in 1992 – 1995, 1999, 2000 and/or 2017.

## Co-op to award \$67,500 in scholarships to Class of 2021

Class of 2021: Polk-Burnett Electric Cooperative is accepting online applications for its Community Service Scholarship Program. We'll award 54 scholarships for \$1,250 each to high school seniors whose parents are members of Polk-Burnett, for a total of \$67,500! Scholarship candidates are also invited to apply for a trip to Washington, D.C.

"This is our opportunity to recognize the sons and daughters of co-op members who make a difference in the lives of others," said Joan O'Fallon, Polk-Burnett communications director. "Since 1987, Polk-Burnett has awarded more than \$778,000 to co-op youth. You could be one of them!"

Giving back to the community and local youth is part of our mission as a cooperative.

*Polk-Burnett's scholarship program does not affect electric rates; it is funded with unclaimed Capital Credits that otherwise would be forfeited to the state, and by the generosity of co-op members who donate Capital Credits to the scholarship fund. If you would like to donate your Capital Credits to the co-op's scholarship fund, please call or visit our website for an enrollment form.*



APPLY ON  
[POLKBURNETT.COM](http://POLKBURNETT.COM)

## Have a safe harvest: Keep equipment clear of power lines



- 1) Use a spotter when operating machinery near power lines.
- 2) Use care when raising augers and truck beds near power lines.
- 3) Keep equipment at least 10 feet from power lines.
- 4) Inspect height of farm equipment and know clearance.
- 5) Always lower extensions when moving loads.
- 6) Never move a power line out of the way or raise it for clearance.
- 7) If a power line is sagging or low, call us at 800-421-0283.

**If contact is made with a power line, stay inside the equipment.** Warn others to stay away and call 911. Do not exit until the utility crew says it is safe. The only reason to exit is if the equipment is on fire. In this case, jump with feet together, then hop away. Do not touch ground and equipment at the same time.

**THANK YOU FOR YOUR MEMBERSHIP!**  
**LOCAL. NOT-FOR-PROFIT. MEMBER-OWNED. COMMUNITY-FOCUSED.**

## Centuria office is Evergreen 100% Green Facility

Polk-Burnett has secured green power to offset the annual electricity use at our Centuria office.

Renewable Energy Credits (RECs) from regional solar, wind, biogas and hydro resources have been retired on behalf of Polk-Burnett by our power provider Dairyland Power Cooperative.

"Polk-Burnett and Dairyland are working together to be future ready and serve members for generations to come with safe, reliable and sustainable energy," said Polk-Burnett General Manager Steve Stroshane.

Being 100% green at our Centuria facility demonstrates our co-op commitment to the environment. Co-op members are also invited to participate in the Evergreen program.

### Evergreen renewable energy blocks for co-op members

Co-op members can support renewable energy by purchasing renewable energy blocks through our Evergreen program.

100 kWh blocks are \$1 per month added to member electric bills. Members can choose to buy one block or enough to power their whole house!

Enroll on [polkburnett.com](http://polkburnett.com) or 800-421-0283.





## Cut energy costs and improve comfort in your home



**\$300 OFF Performance Test for Your Home, Plus, Up To \$1,000 REBATE on Home Energy Upgrades**

Have your home tested by a certified energy rater, using a blower door fan and infrared camera. The energy rater will identify heat loss, evaluate insulation and provide you with a report with the best ways to improve your home's energy performance. **800-421-0283, ext. 595 or polkburnett.com.**



**Know what's below.  
Call before you dig.**

## Be safe: Call 811 before you dig

Are you planting this fall? Installing a fence? Or building a deck? Before you dig into any home improvement project, have utility lines marked. One call helps protect you from injury and expense.

Contact Diggers Hotline three working days before you dig to have buried utility lines located, 800-242-8511, 811 or diggershotline.com. It's free!

Note: Diggers Hotline does not mark private utility lines. Contact your co-op for a list of local electricians that provide this service.

Thank you!

## Fall planting guide

### Thank you for keeping trees out of the right-of-way

The right-of-way (ROW) is a strip of land under power lines. Co-op employees and contractors work throughout the year to clear vegetation in the ROW that may disrupt your electric service or cause harm to people.

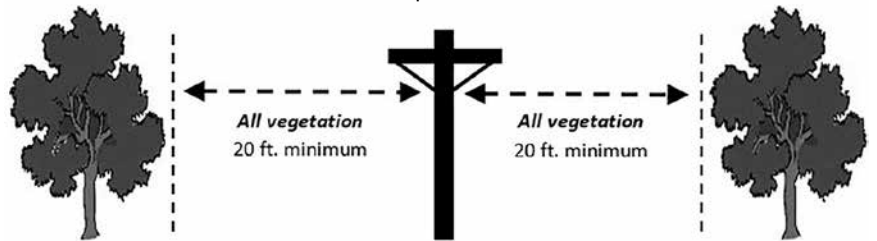
Keeping power lines clear of trees and brush reduces power outages and blinks, and gives linemen better access to maintain and repair power lines.

ROW clearing also improves safety for your home and family, and helps prevent forest fires by ensuring that tree branches do not become energized due to contact with power lines.

Power lines carry high-voltage electricity that can be dangerous—even deadly. Never trim a tree in the ROW or near power lines, and do not allow kids to climb trees close to power lines.

If you see vegetation near power lines that needs to be trimmed or removed, please contact us.

For planting guidelines, visit [polkburnett.com](http://polkburnett.com) or call 800-421-0283, ext. 308.



## Notice: Wisconsin Energy Assistance

Your household may be eligible for the Wisconsin Home Energy Assistance Program, based on household income and size. Contact your county energy assistance office:

☎ Barron 715-537-6340

☎ Burnett 715-349-7600

☎ Dunn 715-232-1116

☎ Polk 715-485-8480

☎ St. Croix 800-606-9227

☎ Washburn 715-468-4747

### September is National Preparedness Month

## Be prepared for storms and power outages

Polk-Burnett works year-round to strengthen the electric grid and prevent power outages, but Mother Nature is a tough opponent and it's important to plan ahead for storms and power outages.

### If your lights go out this fall

1. Check circuit breakers, fuses and the neighbors.
2. Report outages on SmartHub or 800-421-0283.
3. Keep away from fallen power lines, and trees and branches near lines. Report these hazards.
4. Co-op dispatchers and crews are here for you 24/7! Linemen respond to hazards first, then substations and major distribution lines, followed by smaller tap lines and individual service lines.

### Keeping you informed

Visit our Outage Center on [polkburnett.com](http://polkburnett.com) for a live outage map, outage video and FAQs. Enroll to receive outage text alerts and watch Facebook for outage updates.

**OUTAGE NOTIFICATION**

**Enroll to receive outage text alerts if your power goes out**

Co-op linemen work hard to prevent power outages, but Mother Nature is a tough opponent.

Give us your account number and your cell number, and we'll send you outage text alerts, so you'll know:

1. When power goes out at your location
2. Estimated restoration time, whenever possible
3. When power is restored at your location
4. The cause of the outage, whenever possible

Learn more and enroll on [polkburnett.com](http://polkburnett.com)

### IF YOU RECEIVE AN EMAIL SURVEY, WE APPRECIATE YOUR FEEDBACK TO HELP US IMPROVE.

All members who submit a survey will be entered in a drawing for a \$50 bill credit.

Polk-Burnett is your local Touchstone Energy Cooperative. Reliable power with efficiency and extraordinary service.

Like us on Facebook. Follow us on Twitter.

**800-421-0283 • polkburnett.com**



Equal Opportunity Provider and Employer | Member Owned | Community Focused

